



WHAT IS SIMPSON® SDL?

Simpson® Simulated Divided Lite (SDL) is the newest option for ordering your Simpson French and Sash doors. SDL features a single glass unit with bars applied to the glass surface. Combined with an internal “shadow spacer,” SDL provides the appearance of a true divided lite door.

WHY SIMPSON SDL?

Simpson has been manufacturing divided lite doors for nearly a century and recognizes a number of benefits with SDL:

THE LOOK OF A TRUE DIVIDED LITE DOOR

- Bars are permanently affixed to glass surface
- Internal shadow spacer completes authentic look

IMPROVED PERFORMANCE

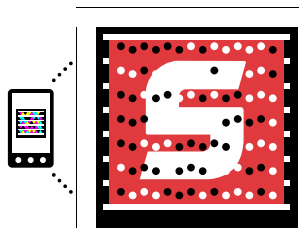
- Achieve ratings to meet hurricane and design-pressure (DP) requirements with divided lite look
- Realize higher energy efficiency ratings with one insulated glass unit

UNCOMPROMISED DESIGN OPTIONS

- 7/8" standard bar thickness
- 11 standard wood species
- Glass textures available
- Select from two bar styles: ViewSaver® and Shaker
- Custom options available

EXPANDED WATERBARRIER® CHOICES

- Achieve the performance advantages of Simpson WaterBarrier technology with a divided lite look



Learn more about Simpson products using your smartphone.

Get the free mobile app at <http://gettag.mobi>

DOORS WITH WATERBARRIER® TECHNOLOGY

FRENCH DOORS



37015

SASH DOORS



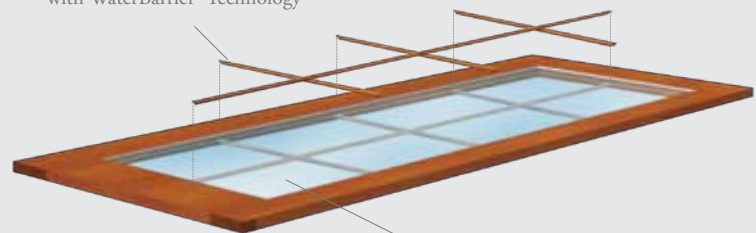
37506



37106
w/ WaterBarrier® Technology

Bars Applied to Glass Surface

- Adhered with latest 3M technology
- Available in 2 profiles
- Choose your species or PVC for use with WaterBarrier® Technology

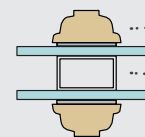


One Insulated Glass Unit

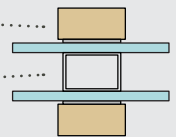
- Superior energy efficiency
- Internal shadow spacer creates look of True Divided Lite
- Glass textures available

PROFILE OPTIONS

SDL with 7/8" ViewSaver® Bar



SDL with 7/8" Shaker Bar



..... Bar Applied to Glass Surface

..... Internal Shadow Spacer Provides True Divided Lite Appearance