



THE SPIRIT OF MODERN DESIGN LIVES ON.

INTRODUCING OUR MODERN LINE.



BORN FROM, AND INFORMED BY, THE NEEDS OF ARCHITECTS AND BUILDERS, OUR **MODERN** LINE IS INTENTIONAL IN BOTH PROCESS AND PRODUCT.

We've considered how every detail can serve you and your vision, guided by the quality and innovation that only Marvin can deliver.

THIS IS DESIGN IN YOUR HANDS.

THIS IS OUR MODULAR SYSTEM.

CONSISTENT PROFILES

MINIMIZE SYSTEM
ALIGNMENT GUESSWORK

INTEGRATED

MULL CHANNEL

PRESERVES SIGHTLINES AND SUPPORTS
STRUCTURAL PERFORMANCE

CRANK OUT AND PUSH OUT
CASEMENTS AVAILABLE

Every product works together as part of a visual system to help you design and configure with ease and confidence. Consistent profiles across all products—along with special innovations like our integrated mull channel—maintain the narrow and clean sightlines so central to modern design.

Pictured below: Modern Direct Glaze and Casement windows (left) and the Modern Multi-Slide door (right)
Certified mulling options are available



MAINTAINS CONSISTENT
NARROW SIGHTLINES
ACROSS ALL PRODUCTS

PREFABRICATED AND
PRE-CONFIGURED
COMPONENTS SAVE
ON INSTALLATION TIME

THIS IS POWER IN SIMPLICITY.

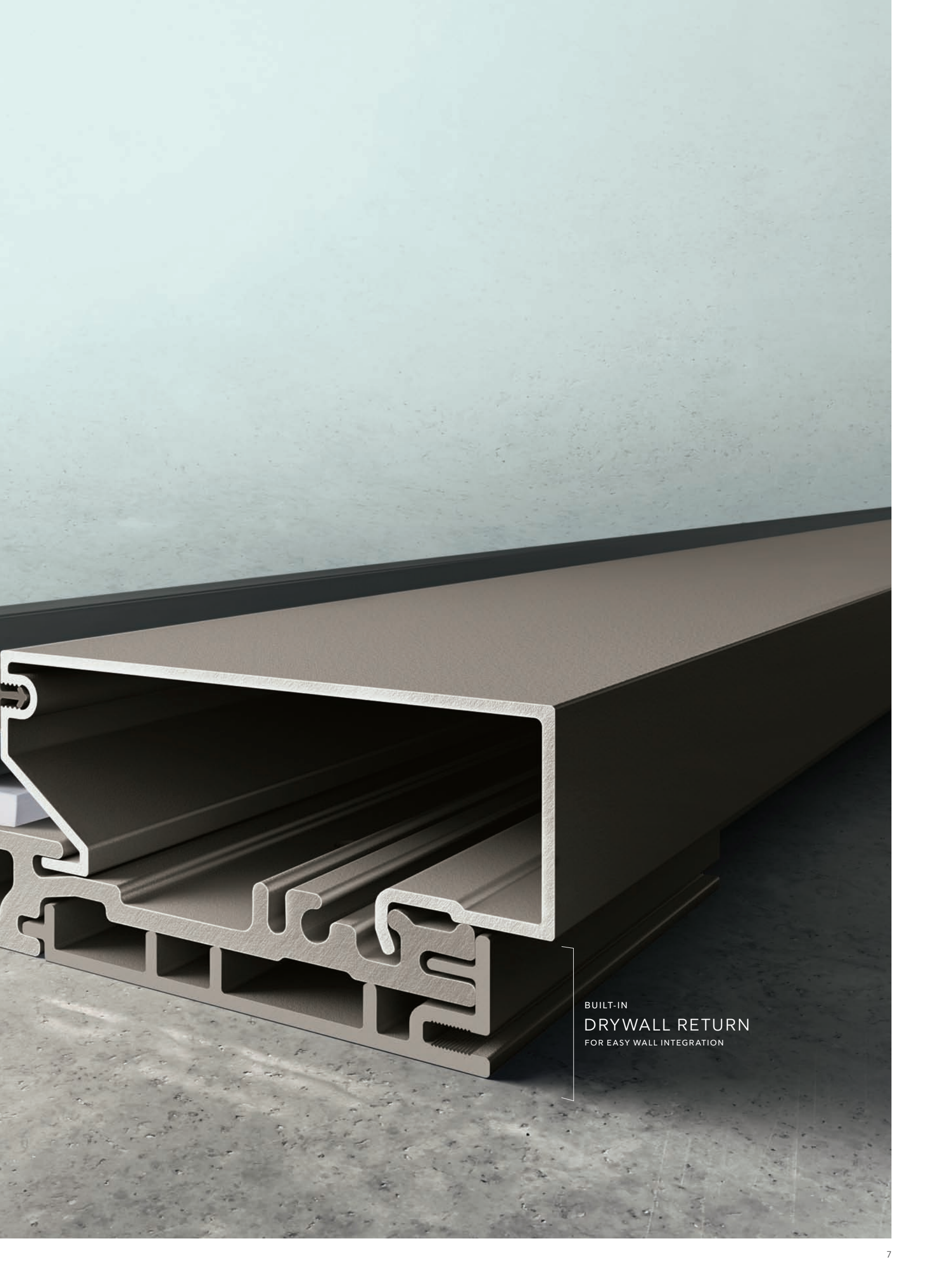
THIS IS OUR PROPRIETARY FRAME.

A new frame design reimagines how modern windows and doors can perform. From exterior to interior, a solid piece of High-Density Fiberglass forms our unique new frame, which requires no additional material to aid in its thermal performance. The frame also features an integrated mull channel that enables mull reinforcement while maintaining sightlines and preserving thermal efficiency.

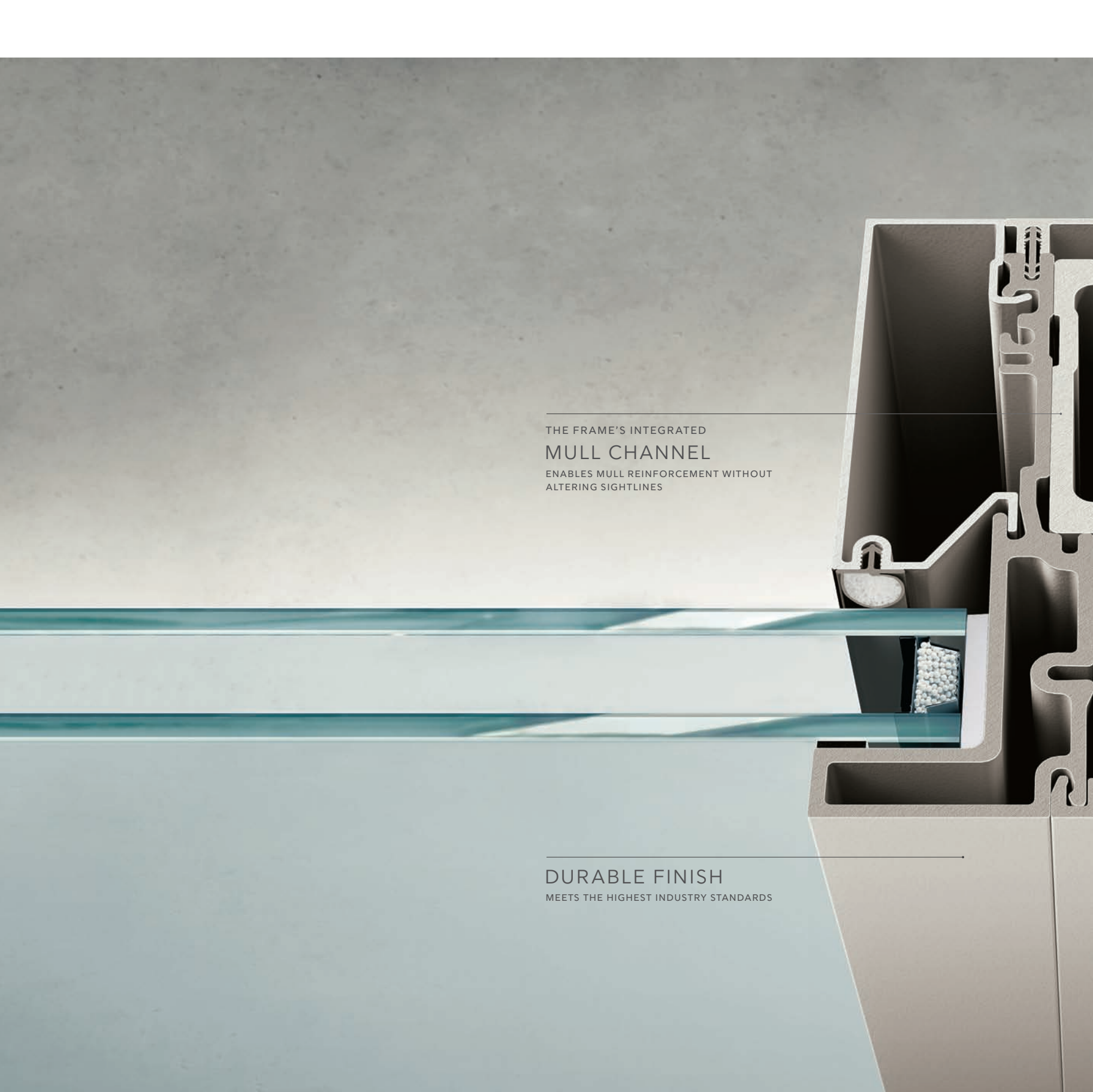
Pictured right: Modern Direct Glaze window cross-section



PROPRIETARY
FRAME DESIGN
HELPS KEEP INTERIOR
TEMPERATURES COMFORTABLE



BUILT-IN
DRYWALL RETURN
FOR EASY WALL INTEGRATION

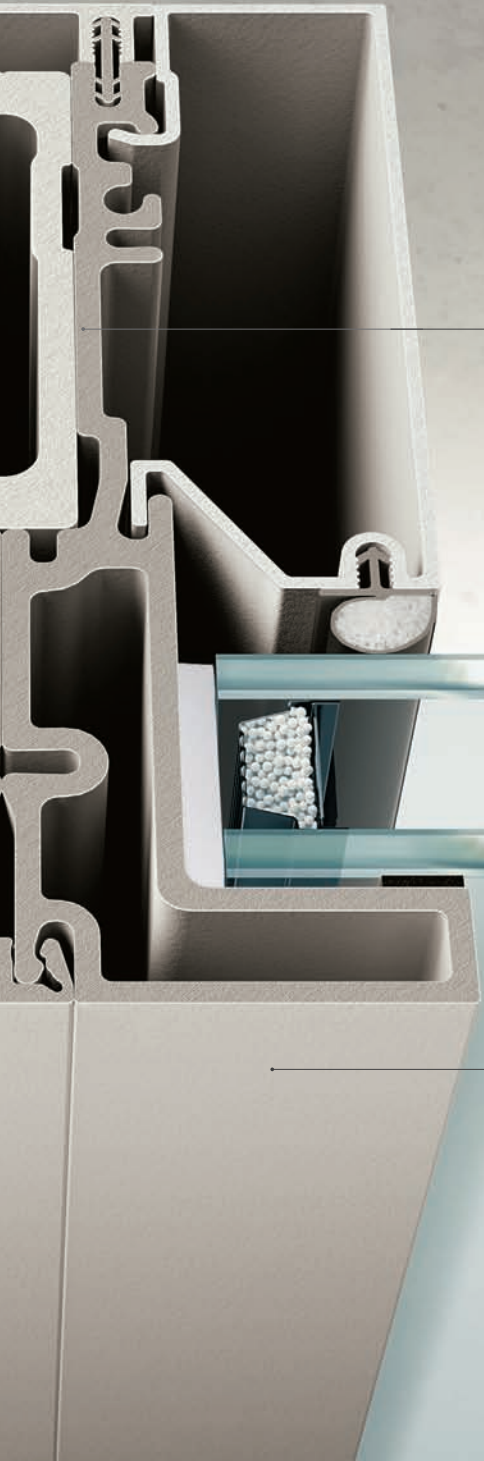


THE FRAME'S INTEGRATED
MULL CHANNEL
ENABLES MULL REINFORCEMENT WITHOUT
ALTERING SIGHTLINES

DURABLE FINISH
MEETS THE HIGHEST INDUSTRY STANDARDS

THIS IS PERFORMANCE BEYOND EXPECTATIONS.

THIS IS HIGH-DENSITY FIBERGLASS.



THERMALLY EFFICIENT
TO PERFORM IN DEMANDING CLIMATES

REVOLUTIONARY HIGH-DENSITY
FIBERGLASS MATERIAL

We envisioned more performance potential for modern windows and doors. So we developed High-Density Fiberglass, a revolutionary material that echoes the look of its modern counterparts with better thermal efficiency.

Pictured above: Modern Direct Glaze mulled window cross-section



ELEMENTAL
ALUMINUM INTERIOR
WITH LOW-GLOSS FINISH

STRENGTH AND DURABILITY
RATED UP TO PG45
FOR IMPRESSIVE PERFORMANCE

DETAILS THAT
ENHANCE THE VIEW
LIKE CONCEALED FASTENERS,
MINIMAL BLACK SPACER BARS,
AND BLACK SEALANT



THIS IS HOW IT ALL

COMES TOGETHER.

Combine product ingenuity with pure modern aesthetics and the result is truly stunning. Our Modern line is made to be built big and perform at scale, complemented by the power of critical design details. A low-gloss aluminum interior adds an elemental feel. Black spacer bars and black sealant minimize visual distractions. And internal covers completely disguise fasteners for clean, crisp edges.

Pictured left: Modern Multi-Slide door with a Clear Anodized interior finish

THIS WAS MADE FOR YOU.



WE PARTNERED WITH ARCHITECTS AND BUILDERS TO DEVELOP A PROCESS THAT ANSWERS THEIR NEEDS AT EVERY STEP ALONG THE WAY.



DELIVERY

We worked to create packaging and delivery systems that help you plan better and make the best use of your time and resources.



It begins with **PRODUCT WEIGHTS** listed on the quote and order confirmation—so you can plan proper equipment and resources in advance. We also provide prominent **WEIGHT LABELS** on every Modern product for easy on-site reference.



All products are packaged to protect components during shipping and handling. Ergonomic **LIFT POINTS** on each end of the unit help you leverage heavy products. Staple-free **CARDBOARD BOOTS** are fully wrapped around each corner. Dual skid plates provide rigidity and maneuverability, so you can slide products across different floor surfaces.

OTHER CONSIDERATIONS

- + Glass is covered with protective film
- + Each unit is stretch wrapped



INSTALLATION

On the job site, efficiency is key. So we created thoughtful products and accessories that ensure the installation runs smoothly.



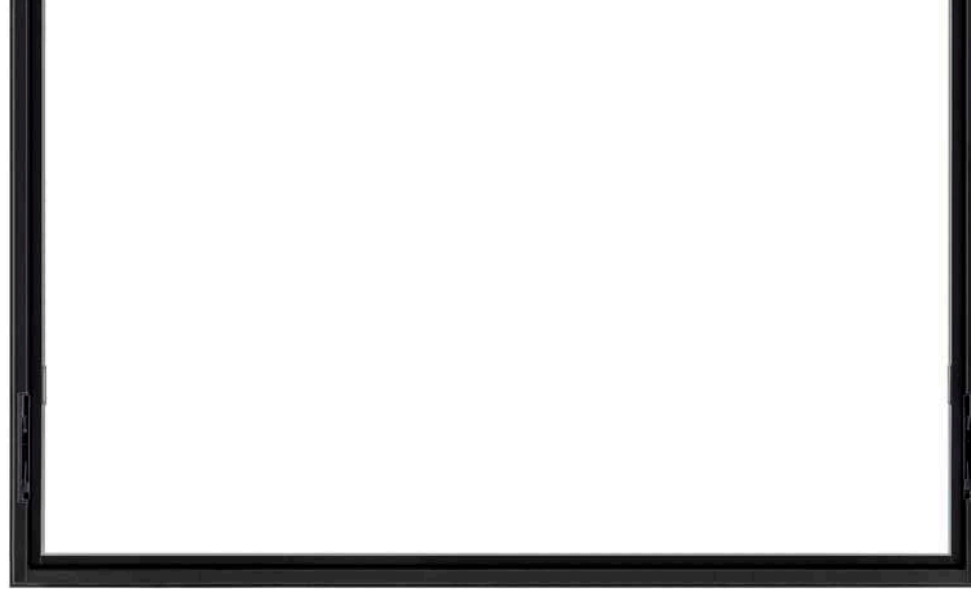
A **JOB BOX** contains all the important parts and documentation you need, in one convenient place. Specially stocked according to your order, inside every job box you'll find:

- + Product hardware
- + Installation screws
- + Injection sealant
- + Installation instructions
- + Order information
- + Warranty registration
- + Touch-up and repair kits
- + And more

Never lose time tracking down an extra part or reference material.

OTHER CONSIDERATIONS

- + Prefabricated and pre-configured components reduce install time
- + Drywall recess in the frame accepts a drywall return for seamless integration



INTERIOR PUSH OUT AWNING SHOWN IN EBONY WITH MATTE BLACK HARDWARE

MODERN AWNING WINDOW

FEATURES

Crank Out and Push Out available

Sleek and modern form

Numerous sizes and configurations available, including right- or left-hand operating

Screens are intentionally designed to achieve a cohesive look with the window

Frame recess accepts a drywall return for seamless integration

Horizontal or vertical ribbon mulling capabilities

HARDWARE FOR ALL AWNING

Concealed multi-point lock system

One locking lever to engage or disengage multi-point locks

Stainless steel hinges

Proprietary Crank Out and Push Out designed hardware

HARDWARE FOR PUSH OUT

Discreet, nested handle at the sash and frame

HARDWARE FOR CRANK OUT

Exclusive rotating handle design

GLASS OPTIONS

Dual or triple-pane insulated glass

Interior cover depths vary based on glass thickness

Black spacer and dark silicone sealant

Low E1, E2, E3, ELR, or ERS glass options

CONFIGURATIONS AND MULLING

Jamb depth 4 1/2"

Awning to awning mullied frames 5 1/2" wide

Seamless mullied assemblies with aluminum reinforcement

THERMAL PERFORMANCE

Dual-pane IG low E2 with Argon 0.28 U-Factor



INTERIOR CRANK OUT AWNING SHOWN IN EBONY WITH MATTE BLACK HARDWARE

UNIT TYPE	AIR TESTED TO PSF	WATER TESTED TO PSF	DESIGN PRESSURE	CERTIFICATION RATING	MAX FRAME SIZE UNIT	
AWNING					WIDTH	HEIGHT
CRANK OUT	1.57	12.1	50	CW-PG50-FW	64"	96"
CRANK OUT	1.57	12.1	45	LC-PG45-FW	96"	64"
PUSH OUT	1.57	12.1	45	CW-PG45-FW	96"	64"
CRANK OUT	1.57	12.1	50	CW-PG50-FW	72"	72"
PUSH OUT	1.57	12.1	50	CW-PG50-FW	89"	48"
MULL ASSEMBLIES					WIDTH	HEIGHT
ALL PRODUCTS	1.57	12.1	40	CW-PG40-FW	168"	96"
ALL PRODUCTS	1.57	12.1	40	CW-PG40-FW	96"	168"



INTERIOR PUSH OUT CASEMENTS SHOWN IN EBONY WITH MATTE BLACK HARDWARE

MODERN CASEMENT WINDOW

FEATURES

Crank Out and Push Out available

Sleek and modern form

Numerous sizes and configurations available, including right- or left-hand operating

Screens are intentionally designed to achieve a cohesive look with the window

Sash can slide across frame for easy wash mode

Frame recess accepts a drywall return for seamless integration

Horizontal or vertical ribbon mulling capabilities

HARDWARE FOR ALL CASEMENT

Concealed multi-point lock system

One locking lever to engage or disengage multi-point locks

Stainless steel hinges

Proprietary Crank Out and Push Out designed hardware

HARDWARE FOR PUSH OUT

Discreet, nested handle at the sash and frame

Optional low or mid-height handle and lock placement

HARDWARE FOR CRANK OUT

Exclusive rotating handle design

GLASS OPTIONS

Dual or triple-pane insulated glass

Interior cover depths vary based on glass thickness

Black spacer and dark silicone sealant

Low E1, E2, E3, ELR, or ERS glass options

Specialty glass: Frosted, Obscure, and Gray or Bronze Tint

CONFIGURATIONS AND MULLING

Casement to casement muller frames 5 1/2" wide

Seamless muller assemblies with aluminum reinforcement

THERMAL PERFORMANCE

Dual-pane IG low E2 with Argon 0.28 U-Factor

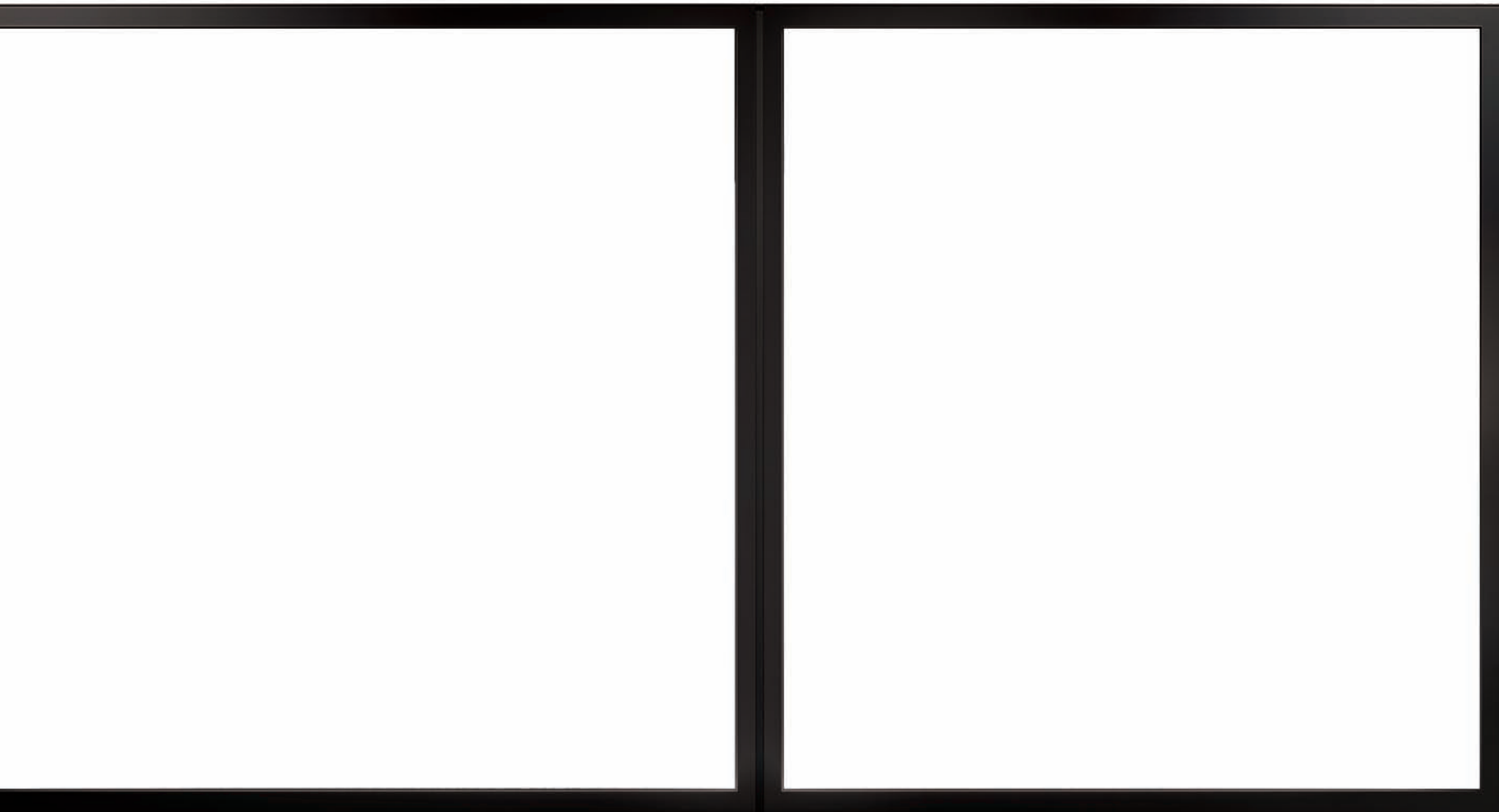
For the most complete technical information, visit marvin.com or talk with your Modern dealer.



EXTERIOR CASEMENTS SHOWN IN EBONY

UNIT TYPE	AIR TESTED TO PSF	WATER TESTED TO PSF	DESIGN PRESSURE	CERTIFICATION RATING	MAX FRAME SIZE UNIT	
CASEMENT					WIDTH	HEIGHT
CRANK OUT AND PUSH OUT	1.57	12.1	50	CW-PG50-FW	36"	102"
CRANK OUT AND PUSH OUT	1.57	12.1	50	CW-PG50-FW	40"	96"
CRANK OUT AND PUSH OUT	1.57	12.1	50	CW-PG50-FW	44"	92"
MULL ASSEMBLIES					WIDTH	HEIGHT
ALL PRODUCTS	1.57	12.1	40	CW-PG40-FW	168"	96"
ALL PRODUCTS	1.57	12.1	40	CW-PG40-FW	96"	168"

MODERN DIRECT GLAZE WINDOW



EXTERIOR DIRECT GLAZE SHOWN IN EBONY

FEATURES

Large expanses of glass for maximum views with numerous configurations and sizes available

Rectangular and polygon shapes

Frame recess accepts a drywall return for seamless integration

Horizontal or vertical ribbon mulling capabilities

Non-certified mulling capabilities

GLASS OPTIONS

Dual or triple-pane insulated glass
Interior cover depths vary based on glass thickness

Argon or Krypton-Argon gas blend

Black spacer and silicone sealant

Low E1, E2, E3, ELR, or ERS glass options

Specialty glass: Frosted, Obscure, and Gray or Bronze Tint

MULLING

Mulled frames are less than 3" wide

Approximate 3" frame divider simulates a mulled Direct Glaze frame

CONFIGURATIONS

Rectangle / Square

Isosceles Triangle

Right Triangle, right or left

Trapezoid, right or left

Pentagon

SIZING

Max Frame Size Certified 141 ³/₈" x 93 ³/₈"

Jamb depth 4 ¹/₂"

For the most complete technical information, visit marvin.com or talk with your Modern dealer.

**SINGLE UNIT
PERFORMANCE RATINGS**

Air Tested to PSF	6.24
Water Tested to PSF	7.5
Performance Grade	CW-PG40-FW
Max Frame Size Height	93 ³ / ₈ "
Max Frame Size Width	141 ³ / ₈ "

**VERTICAL OR HORIZONTAL MULLED UNITS
PERFORMANCE RATINGS**

Air Tested to PSF	1.57
Water Tested to PSF	6.0
Performance Grade	CW-PG40-FW
Max Frame Size Height	96"
Max Frame Size Width	168"
Max Tributary Width or Height	84"

THERMAL PERFORMANCE

Dual-pane IG low E2 with Argon	0.28 U-Factor
--------------------------------	---------------



MODERN MULTI-SLIDE DOOR

INTERIOR MULTI-SLIDE DOOR SHOWN IN EBONY WITH MATTE BLACK HARDWARE

For the most complete technical information, visit marvin.com or talk with your Modern dealer.

FEATURES

Large expanses of glass for maximum views with numerous configurations and sizes available

Consistent panel thickness with narrow stiles and rails, regardless of configuration or size

Minimalist hardware designed for superior functionality, features a sleek and modern form

Three sill options are available in flush, performance, and high performance in Black or Bronze

HARDWARE

Minimal pull and latch handles

Keyed or non-keyed options available

Multi-point lock

Quad rollers with end adjustment

GLASS OPTIONS

Dual or triple-pane insulated glass

Argon or Krypton-Argon blend gas

Black spacer and dark silicone sealant

Low E1, E2, E3, ELR, or ERS glass options

Specialty glass: Frosted, Obscure, and Gray or Bronze tint

ADD-ONS

Automatic Control

Lock Status Sensor

Sliding Screens

PERFORMANCE GRADES*

Uni-Directional Stacked up to LC-PG45-SD

Uni-Directional Pocket up to LC-45-SD

Bi-Parting Stacked up to LC-PG40-SD

Bi-Parting Pocket up to LC-PG40-SD

THERMAL PERFORMANCE

Dual-pane IG low E2 with Argon 0.28 U-Factor

MULTI-SLIDE CONFIGURATIONS AND SIZING

Over 30 configurations available

+ Uni-Directional configurations: 1 to 6 panels, available in stacked or pocket

+ Bi-Parting configurations: 2 to 10 panels, available in stacked or pocket

Sized to order up to 6' x 12' panels

Meeting stiles are less than 3" wide



* Varies with sill type

MINIMUMS AND MAXIMUMS

MODERN MULTI-SLIDE DOOR STACKED

UNIT TYPE	MIN FRAME SIZE UNIT		MAX FRAME SIZE UNIT		MAX FRAME SIZE UNIT	
	WIDTH	HEIGHT	WIDTH	HEIGHT	WIDTH	HEIGHT
UNI-DIRECTIONAL			Based on 6ft wide panels		Based on > 6ft wide panels*	
OX OR XO	55 11/16"	62 3/64"	143 11/16"	144"	191 11/16"	120"
OXX OR XXO	80 13/16"	62 3/64"	212 13/16"	144"	284 13/16"	120"
OXXX OR XXXO	105 15/16"	62 3/64"	281 15/16"	144"	NA	NA
OXXXX OR XXXXO	131 1/16"	62 3/64"	351 1/16"	144"	NA	NA
OXXXXX OR XXXXXO	156 3/16"	62 3/64"	420 3/16"	144"	NA	NA

UNIT TYPE	MIN FRAME SIZE UNIT		MAX FRAME SIZE UNIT		MAX FRAME SIZE UNIT	
	WIDTH	HEIGHT	WIDTH	HEIGHT	WIDTH	HEIGHT
BI-PARTING			Based on 6ft wide panels		Based on > 6ft wide panels*	
OX - XO	109 3/4"	76 39/64"	285 3/4"	144"	381 3/4"	120"
OXX - XXO	160"	76 39/64"	424"	144"	568"	120"
OXXX - XXXO	210 1/4"	76 39/64"	562 1/4"	144"	NA	NA
OXXXX - XXXXO	260 1/2"	76 39/64"	700 1/2"	144"	NA	NA

O = Stationary Panel X = Operating Panel
 * Panel quantity per unit limited to two panels

For the most complete technical information, visit marvin.com or talk with your Modern dealer.

MINIMUMS AND MAXIMUMS

MODERN MULTI-SLIDE DOOR POCKET

UNIT TYPE	MIN FRAME SIZE UNIT		MAX FRAME SIZE UNIT		MAX FRAME SIZE UNIT	
	WIDTH	HEIGHT	WIDTH	HEIGHT	WIDTH	HEIGHT
UNI-DIRECTIONAL						
			Based on 6ft wide panels		Based on > 6ft wide panels*	
PX OR XP	30 ⁹ / ₁₆ "	68 ¹⁹ / ₆₄ "	74 ⁹ / ₁₆ "	144"	98 ⁹ / ₁₆ "	120"
PXX OR XXP	55 ¹¹ / ₁₆ "	68 ¹⁹ / ₆₄ "	143 ¹¹ / ₁₆ "	144"	191 ¹¹ / ₁₆ "	120"
PXXX OR XXXP	80 ¹³ / ₁₆ "	68 ¹⁹ / ₆₄ "	212 ¹³ / ₁₆ "	144"	NA	NA
PXXXX OR XXXXP	105 ¹⁵ / ₁₆ "	68 ¹⁹ / ₆₄ "	281 ¹⁵ / ₁₆ "	144"	NA	NA
PXXXXX OR XXXXXP	131 ¹ / ₁₆ "	68 ¹⁹ / ₆₄ "	351 ¹ / ₁₆ "	144"	NA	NA
PXXXXXX OR XXXXXXP	156 ³ / ₁₆ "	68 ¹⁹ / ₆₄ "	420 ³ / ₁₆ "	144"	NA	NA

UNIT TYPE	MIN FRAME SIZE UNIT		MAX FRAME SIZE UNIT		MAX FRAME SIZE UNIT	
	WIDTH	HEIGHT	WIDTH	HEIGHT	WIDTH	HEIGHT
BI-PARTING						
			Based on 6ft wide panels		Based on > 6ft wide panels*	
PX - XP	59 ¹ / ₂ "	80 ⁵⁵ / ₆₄ "	147 ¹ / ₂ "	144"	195 ¹ / ₂ "	120"
PXX - XXP	109 ³ / ₄ "	80 ⁵⁵ / ₆₄ "	285 ³ / ₄ "	144"	381 ³ / ₄ "	120"
PXXX - XXXP	160"	80 ⁵⁵ / ₆₄ "	424"	144"	NA	NA
PXXXX - XXXXP	210 ¹ / ₄ "	80 ⁵⁵ / ₆₄ "	562 ¹ / ₄ "	144"	NA	NA
PXXXXX - XXXXXP	260 ¹ / ₂ "	80 ⁵⁵ / ₆₄ "	700 ¹ / ₂ "	144"	NA	NA

P = Pocket Panel X = Operating Panel

* Panel quantity per unit limited to two panels

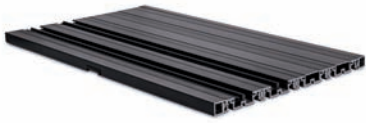




SILL OPTIONS

We've innovated every aspect of the new Modern line, right down to the smallest details. We offer flush sill options for both temperate and inclement conditions as well as a performance sill for areas where recessing isn't an option.

Pictured right: Detail of the Flush Sill

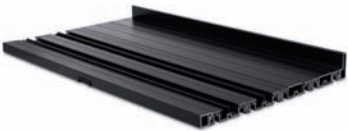


FLUSH SILL

Recommended for protected areas

Not certified for performance

ADA capable when properly installed



PERFORMANCE SILL

Recommended for areas where performance is needed and the sill is not recessed

Rated and certified for performance



HIGH PERFORMANCE SILL

Ultimate performance

Rated and certified for performance

ADA capable when properly installed





CURATED COLORS

INTERIOR COLORS · LOW-GLOSS ALUMINUM

GUNMETAL

BRONZE

EBONY

CLEAR ANODIZED

STONE WHITE

Our intentionally selected color palette evokes the elemental nature of modern design. Choose split interior and exterior color finishes or matching finishes designed to coordinate.

EXTERIOR COLORS • HIGH-DENSITY FIBERGLASS

GUNMETAL

BRONZE

EBONY

SILVER

STONE WHITE

MATTE BLACK



STONE WHITE



SILVER



SATIN NICKEL



HARDWARE FINISHES



From low-profile handles to nested locks, our hardware is designed to complement clean, modern lines while delivering reliable performance. Select from a variety of finishes and styles to fit your vision.

Pictured above: Casement and Awning Crank Out hardware and Multi-Slide door interior and exterior multi-point lock system handles

SCREENS

All screens are intentionally designed for uninterrupted views, ease of use, and a sleek modern look.

Pictured right: Modern Awning window



CASEMENT AND AWNING PUSH OUT

Concealed screen frame does not disrupt sightlines or view

High transparency mesh

Innovative latch color matched to the interior unit

Concealed hinges support operability

CASEMENT AND AWNING CRANK OUT

Concealed screen frame does not disrupt sightlines or view

High transparency mesh

Innovative latch color matched to the interior unit

Lift in and out operability









THIS IS ONLY THE BEGINNING.

EXPERIENCE IT AT

YOUR MODERN DEALER TODAY.



At Marvin, we're driven to imagine
and create better ways of living, designing
windows and doors that open new
possibilities for the people who use them.

To learn more visit us at [MARVIN.COM/MODERN](https://www.marvin.com/modern)

19983042

Marvin Lumber and Cedar Co., Warroad, MN 56763.

©2019 Marvin Lumber and Cedar Co., LLC. All rights reserved.
®Registered trademark of Marvin Lumber and Cedar Co., LLC.

Information regarding status of patent applications,
as well as product features and specifications, is subject to
change without notice. November 2019.

For warranty information, please visit [marvin.com](https://www.marvin.com)

Please note: Colors shown in printed materials are simulations
and may not precisely duplicate product or finish colors.
Contact your local Modern dealer to view actual product
and finish color samples.